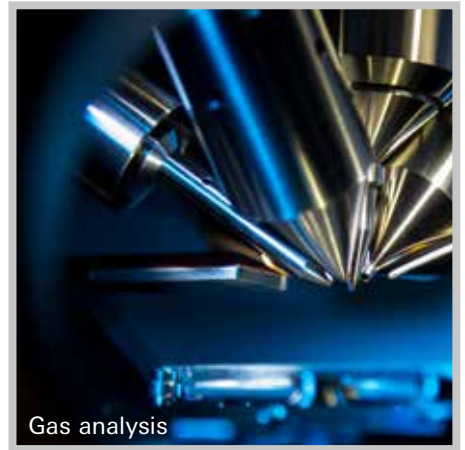




# HiCube® Neo

The new generation of  
pumping stations



Gas analysis



Cryogenics



High and ultra-high vacuum

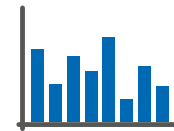
# HiCube<sup>®</sup> Neo

The new generation of  
pumping stations



Simple operation  
with touch display

Your added value



Measurement  
data recording  
via OPC UA

## Powerful and versatile

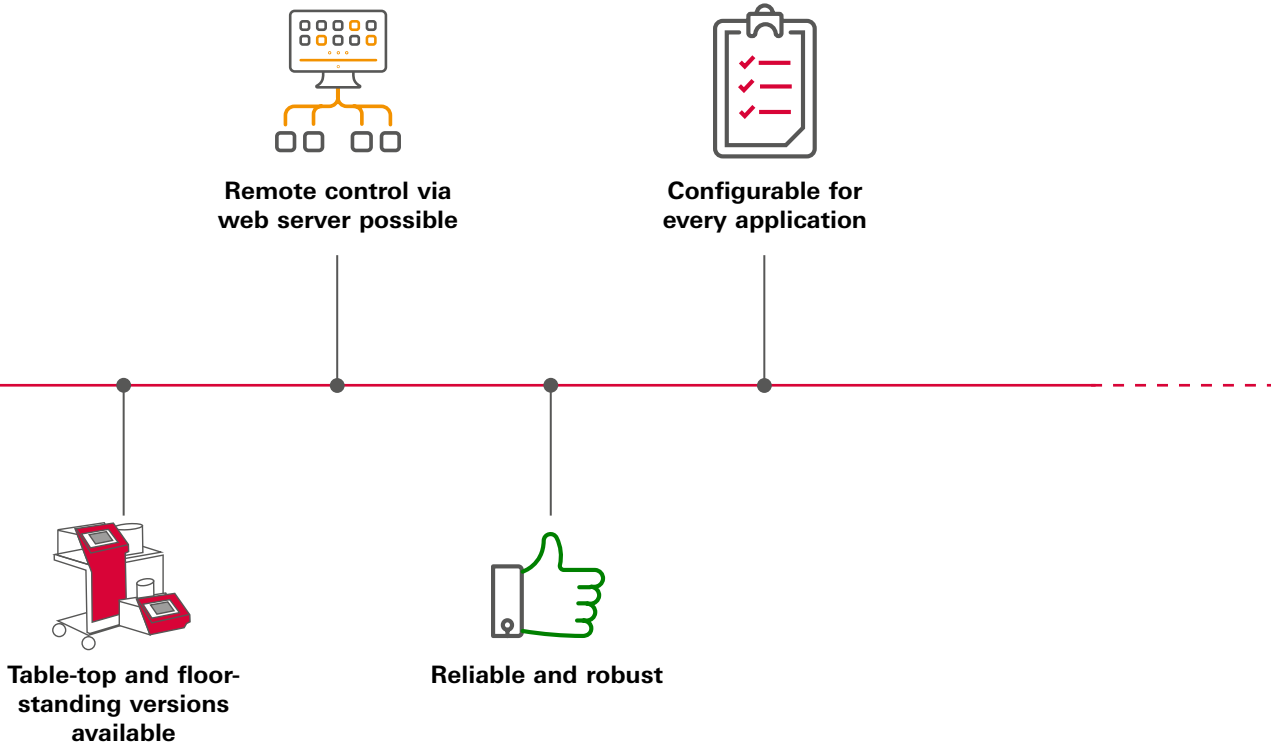
With a pumping speed of 80–800 l/s, our HiCube Neo turbo pumping unit offers the performance you need for your high vacuum applications. When using a HiPace H, an ultra-high vacuum of  $< 10^{-10}$  hPa can be achieved. The availability of different backing pumps, such as diaphragm, rotary vane, scroll and multi-stage Roots pumps, makes it extremely versatile. With desktop and standalone versions and configurability for any application, we offer maximum flexibility.

## Intuitive control and analysis

The HiCube Neo is ready for immediate use thanks to its plug-and-play operation. It is controlled intuitively via the 7" color touch screen control panel. Convenient monitoring and remote control via the web server are also possible, while the recording of measurement data via OPC UA, enables detailed analysis for optimum process control. Combine the HiCube Neo with our comprehensive portfolio of measuring devices and other accessories to create customized solutions for any high vacuum application.

## Reliable and robust

Rely on the proven robustness and reliability of our HiCube Neo, which is designed to work reliably even under demanding conditions. The open design enables easy maintenance and uncomplicated access to the components.



#### **Energy efficient**

The energy-efficient stand-by operation of the backing pump not only saves energy, but also reduces your operating costs.

#### **Areas of application**

The HiCube Neo turbopumping unit is the ideal partner for a wide range of applications in industry and research & development when it comes to generating high vacuum or pumping out small volumes.

#### **Typical fields of application are**

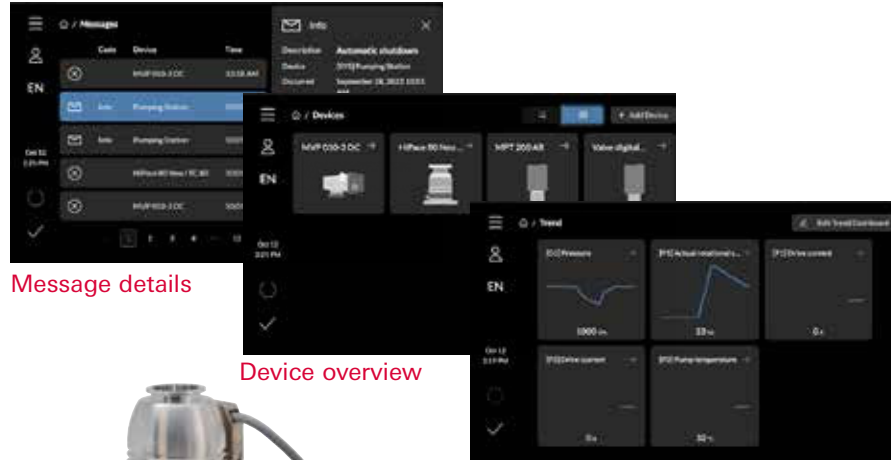
- Gas analysis
- Calibration of measuring tubes
- Laboratory applications
- Residual gas analysis
- Cryogenics

Experience the future of vacuum technology with our new turbopumping station – innovative, powerful and tailored to your requirements.

# HiCube® Neo

## Connection options and desktop unit configurations

### Displays



Message details

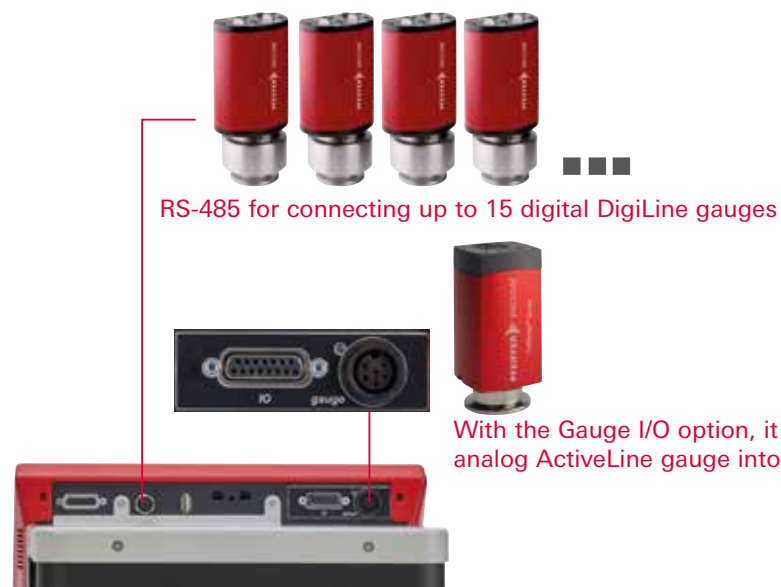
Device overview

Trend overview



Web dashboard via Ethernet connection for remote control of the pumping station



### Connection options





**Desktop unit**

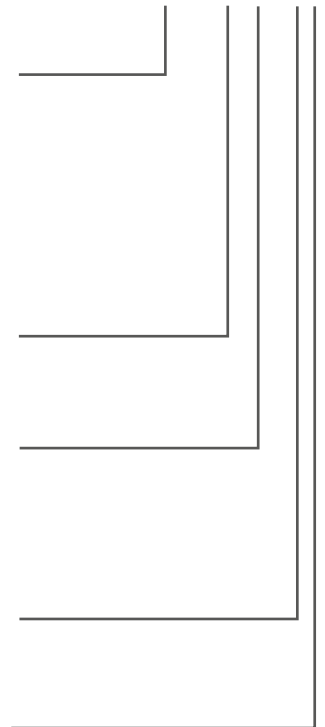
<b>Turbo pumps</b>		Ideal for UHV applications
		
<b>HiPace 80 Neo</b>	<b>HiPace 300</b>	<b>HiPace 300 H</b>

<b>Backing pumps</b>	
	
<b>MVP 015-2</b>	<b>MVP 030-3</b>

**Order number matrix HiCube Neo – Desktop unit**

<b>Turbopump</b>		<b>bb</b>
	DN 40 ISO-KF	<b>00</b>
HiPace 80 Neo	DN 63 ISO-K	<b>01</b>
	DN 63 CF-F	<b>02</b>
HiPace 300	DN 100 ISO-K	<b>20</b>
	DN 100 CF-F	<b>21</b>
HiPace 300 H	DN 100 ISO-K	<b>22</b>
	DN 100 CF-F	<b>23</b>
<b>Backing pump</b>		<b>cc</b>
Diaphragm pump	MVP 015-2	<b>00</b>
	MVP 030-3	<b>01</b>
<b>Accessories</b>		<b>d</b>
Gauge I/O + venting valve		<b>1</b>
Gauge I/O		<b>3</b>
Venting valve		<b>5</b>
Without accessories		<b>7</b>
<b>Cooling</b>		<b>e</b>
Air cooling		<b>0</b>
Water cooling		<b>1</b>
<b>Extension kit (for external operation of the turbopump)</b>		<b>f</b>
Without extension		<b>0</b>
Cable and fore-vacuum line set 3 m		<b>1</b>
Cable and fore-vacuum line set 5 m		<b>2</b>
Cable and fore-vacuum line set 10 m		<b>3</b>

**PM Q1bb ccd ef**



# HiCube® Neo

## Floor-standing unit configurations

### Floor-standing unit

Turbopumps						
						
HiPace 80 Neo	HiPace 300 / HiPace 300 H <sup>1)</sup>	HiPace 350	HiPace 400	HiPace 450	HiPace 700 / HiPace 700 H <sup>1)</sup>	HiPace 800 / HiPace 800 H <sup>1)</sup>
Backing pumps						
						
DuoLine 6,11,20 M		HiScroll 6, 12,18		SmartVane 55, 77		ACP 15, 28

<sup>1)</sup> The HiPace H is ideal for UHV applications

### Control and safety valves



Turbopump with venting valve



Backing pump with backing vacuum safety valve





**Order number matrix HiCube Neo – Floor-standing unit**

**PM Q2bb ccd ef**

<b>Turbopump</b>		<b>bb</b>		
HiPace 80 Neo	DN 40 ISO-KF	<b>00</b>	HiPace 450 DN 160 ISO-K	<b>60</b>
	DN 63 ISO-K	<b>01</b>	DN 160 CF-F	<b>61</b>
	DN 63 CF-F	<b>02</b>	HiPace 700 DN 160 ISO-K	<b>80</b>
HiPace 300	DN 100 ISO-K	<b>20</b>	DN 160 CF-F	<b>81</b>
	DN 100 CF-F	<b>21</b>	HiPace 700 H DN 160 ISO-K	<b>82</b>
HiPace 300 H	DN 100 ISO-K	<b>22</b>	DN 160 CF-F	<b>83</b>
	DN 100 CF-F	<b>23</b>	HiPace 800 DN 200 ISO-K	<b>90</b>
HiPace 350	DN 100 ISO-K	<b>40</b>	DN 200 CF-F	<b>91</b>
	DN 100 CF-F	<b>41</b>	HiPace 800 H DN 200 ISO-K	<b>92</b>
HiPace 400	DN 100 ISO-K	<b>50</b>	DN 200 CF-F	<b>93</b>
	DN 100 CF-F	<b>51</b>		

<b>Backing pump</b>		<b>cc</b>	
Two-stage rotary vane pump	Duo 6 M, 110 V		<b>10</b>
	Duo 6 M, 230 V		<b>11</b>
	Duo 11 M, 110 V		<b>12</b>
	Duo 11 M, 230 V		<b>13</b>
	Duo 20 M, 110 V		<b>14</b>
	Duo 20 M, 230 V		<b>15</b>
Scroll pump <sup>1)</sup>	HiScroll 6		<b>30</b>
	HiScroll 12		<b>31</b>
	HiScroll 18		<b>32</b>
Single-stage rotary vane pump	SmartVane 55		<b>40</b>
	SmartVane 70		<b>41</b>
Multistage Roots pump <sup>1)</sup>	ACP 15		<b>50</b>
	ACP 28		<b>51</b>
	ACP 40		<b>52</b>

<b>Accessories</b>		<b>d</b>	
Gauge I/O + venting valve + fore vacuum safety valve			<b>0</b>
Gauge I/O + venting valve			<b>1</b>
Gauge I/O + fore vacuum safety valve			<b>2</b>
Gauge I/O			<b>3</b>
Venting valve and fore vacuum safety valve			<b>4</b>
Venting valve			<b>5</b>
Fore vacuum safety valve			<b>6</b>
Without accessories			<b>7</b>

<b>Cooling</b>		<b>e</b>	
Air cooling			<b>0</b>
Water cooling			<b>1</b>

<b>Extension kit (for external operation of the turbopump)</b>		<b>f</b>	
Without extension			<b>0</b>
Cable and fore-vacuum line set 3 m			<b>1</b>
Cable and fore-vacuum line set 5 m			<b>2</b>
Cable and fore-vacuum line set 10 m			<b>3</b>

<sup>1)</sup> Only in combination with fore vacuum safety valve

## Your Success. Our Passion.

We give our best for you every day –  
worldwide!

Are you looking for an  
optimal vacuum solution?  
Please contact us:

**Pfeiffer Vacuum GmbH**  
Germany  
T +49 6441 802-0



Errors excepted. All data subject to change without prior notice. PT 0210 PEN (March 2024/POD)

Follow us on social media  
#pfeiffervacuum



[www.pfeiffer-vacuum.com](http://www.pfeiffer-vacuum.com)

**PFEIFFER**  **VACUUM**